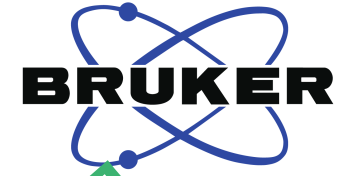


7.581
7.576
7.560
7.555
7.447
7.441
7.144
7.122
6.812
6.763
6.758
6.465
6.460
5.406
5.180
5.164
5.084
5.066
4.635
4.552
3.875
3.843
3.668
3.664
3.624
3.602
3.586
3.489
3.482
3.466
3.457
3.441
3.426
3.419
3.403
3.388
3.179
3.156
3.132

1.087
1.072

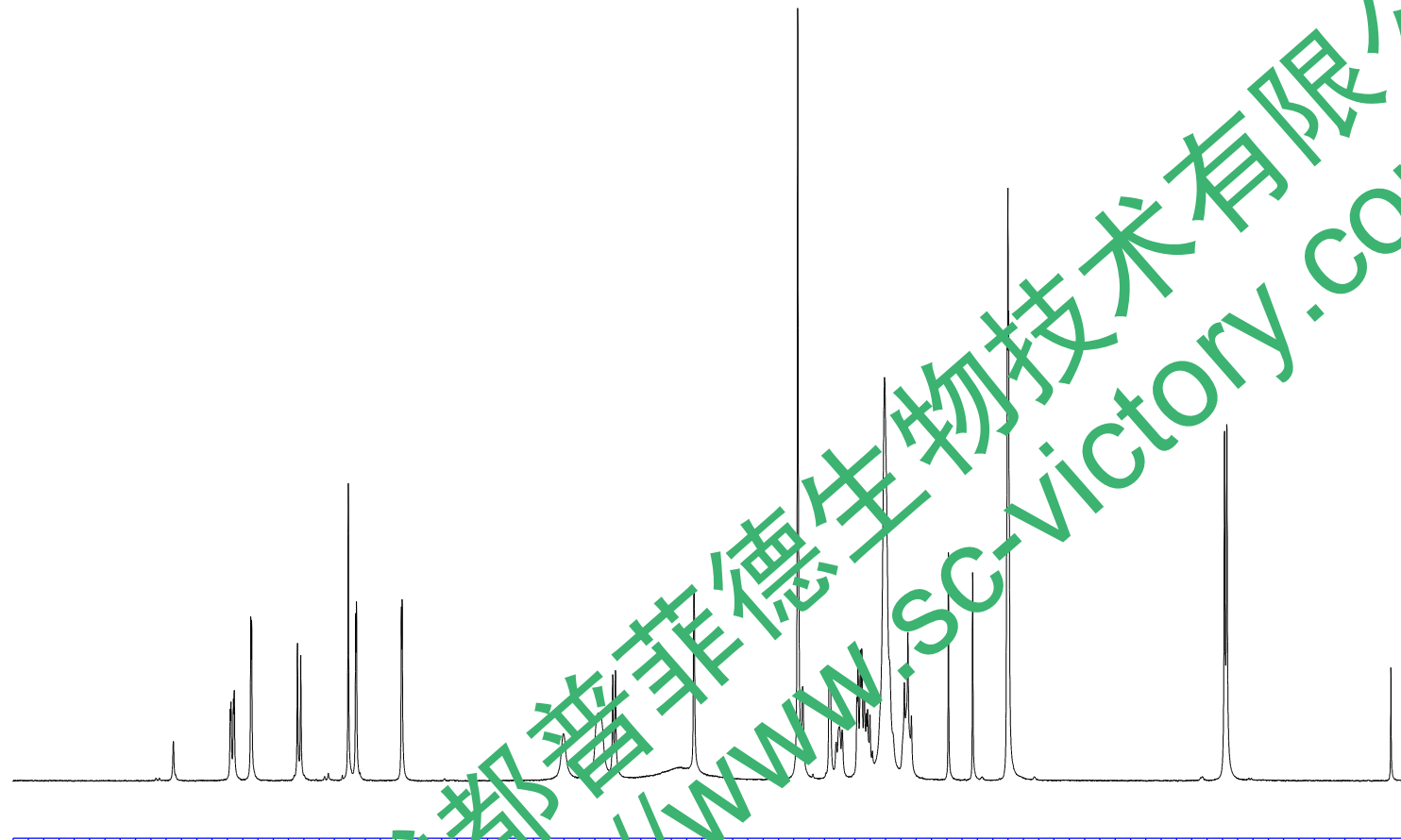


Current Data Parameters
NAME DiAoSiMing-1H NMR DMSO
EXPNO 1
PROCNO 1

F2 - Acquisition Parameters
Date_ 20170223
Time 10.05
INSTRUM spect
PROBHD 5 mm PABBO BB/
PULPROG zg30
TD 65536
SOLVENT DMSO
NS 16
DS 2
SWH 8012.820 Hz
FIDRES 0.122266 Hz
AQ 4.0894465 sec
RG 124.64
DW 62.400 usec
DE 6.50 usec
TE 301.1 K
D1 2.00000000 sec
TD0 1

==== CHANNEL f1 =====
SFO1 400.1324710 MHz
NUC1 1H
P1 14.79 usec
PLW1 11.50800037 W

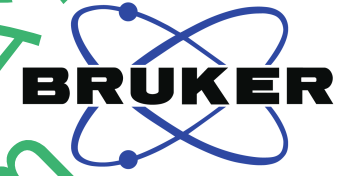
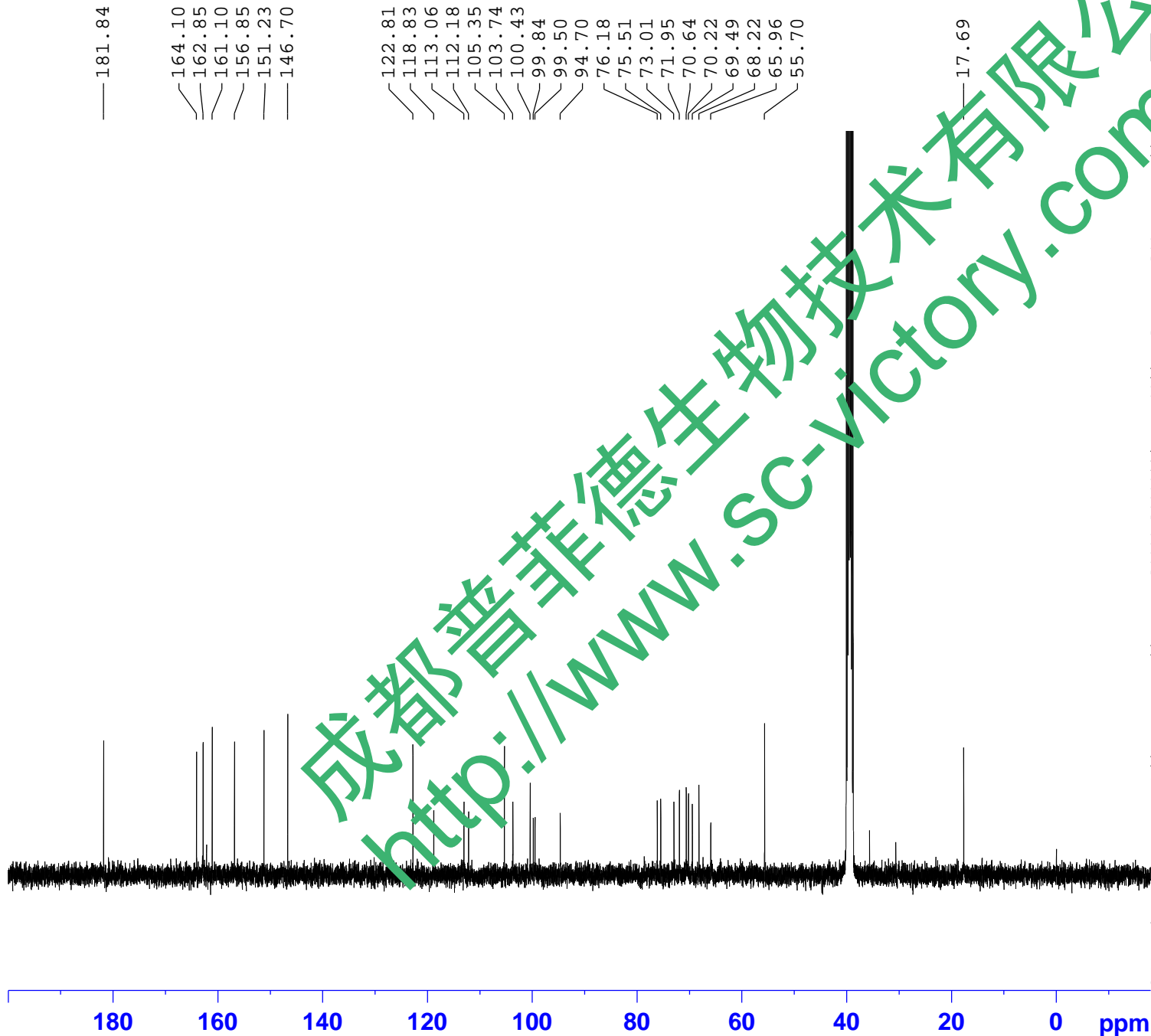
F2 - Processing parameters
SI 65536
SF 400.1300025 MHz
WDW EM
SSB 0
LB 0.30 Hz
GB 0
PC 1.00
SR 2.50 Hz



8.5 8.0 7.5 7.0 6.5 6.0 5.5 5.0 4.5 4.0 3.5 3.0 2.5 2.0 1.5 1.0 0.5 ppm

1.00
0.99
1.00
0.99
1.01
1.02
1.03
1.09
1.23
3.18
2.99
1.13
1.11
1.13
3.32
2.29
3.17

http://www.sc-victory.com



Current Data Parameters
 NAME DiAoSiMing-13C NMR DMSO
 EXPNO 1
 PROCNO 1

F2 - Acquisition Parameters
 Date_ 20170224
 Time 9.05
 INSTRUM spect
 PROBHD 5 mm PABBO BB/
 PULPROG zgig30
 TD 65536
 SOLVENT DMSO
 NS 3516
 DS 4
 SWH 24038.461 Hz
 FIDRES 0.366798 Hz
 AQ 1.3631488 sec
 RG 202.5
 DW 20.800 usec
 DE 6.50 usec
 TE 301.1 K
 D1 2.0000000 sec
 D11 0.0300000 sec
 TD0 1

==== CHANNEL f1 =====
 SFO1 100.6228298 MHz
 NUC1 13C
 P1 10.13 usec
 PLW1 51.0000000 W

==== CHANNEL f2 =====
 SFO2 400.1316005 MHz
 NUC2 1H
 CPDPRG[2] waltz16
 PCPD2 90.00 usec
 PLW2 11.50800037 W
 PLW12 0.31077999 W

F2 - Processing parameters
 SI 262144
 SF 100.6128274 MHz
 WDW EM
 SSB 0
 LB 1.00 Hz
 GB 0
 PC 1.40
 SR 58.37 Hz